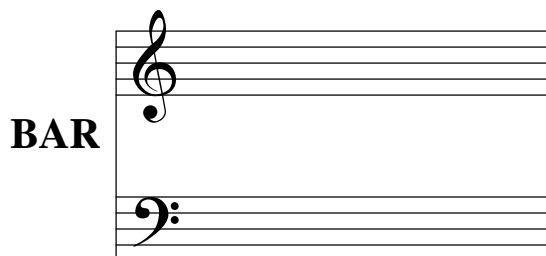


TABLE OF CONTENTS

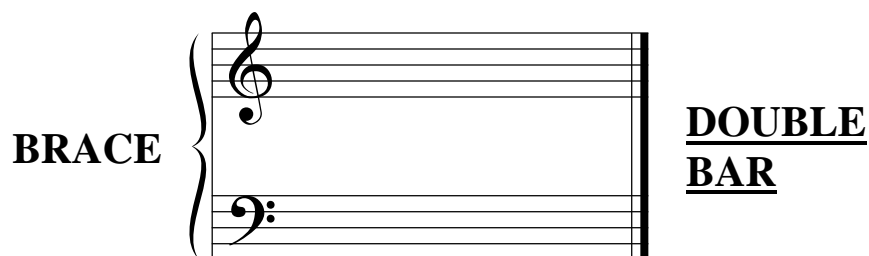
Lesson 1: The Grand Staff.....	1
Lesson 2: Line Notes and Space Notes.....	7
Lesson 3: Letter Names of Treble Clef Notes.....	9
Lesson 4: Letter Names of Bass Clef Notes.....	13
Review: Letter Names of Notes.....	17
Lesson 5: Sharps, Flats, and Naturals.....	19
Lesson 6: Half Steps and Whole Steps.....	25
Lesson 7: Intervals.....	27
Lesson 8: C, F, G, and D Major Five Finger Patterns and Triads.....	29
Lesson 9: c, f, g, and d minor Five Finger Patterns and Triads.....	35
Review: Major and minor Five Finger Patterns and Triads.....	39
Review: Lessons 1-9.....	43
Lesson 10: C, F, and G Major Key Signatures.....	45
Lesson 11: C, F, and G Major Scales.....	49
Lesson 12: Time Signatures.....	51
Lesson 13: Signs and Terms.....	57
Review: Lessons 10-13.....	59
Review Test.....	61

THE GRAND STAFF

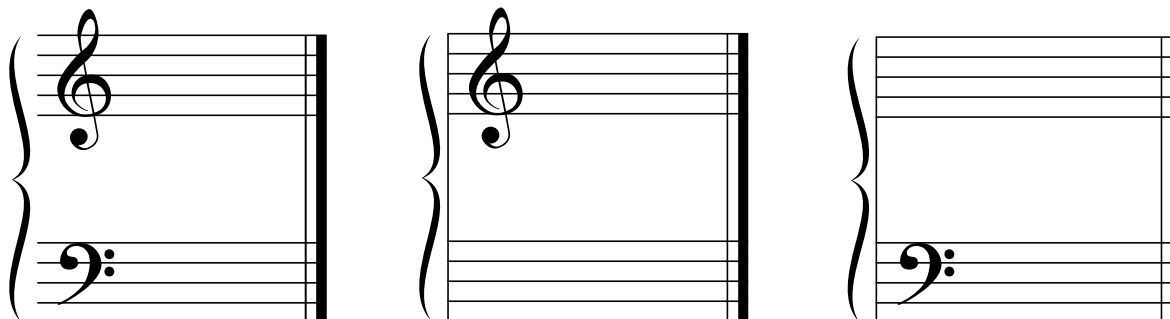
To make a GRAND STAFF, begin by joining the treble and bass clefs with a BAR on their left side.



To finish the Grand Staff, a DOUBLE BAR (two bars) is placed on the right side, and a BRACE on the left.

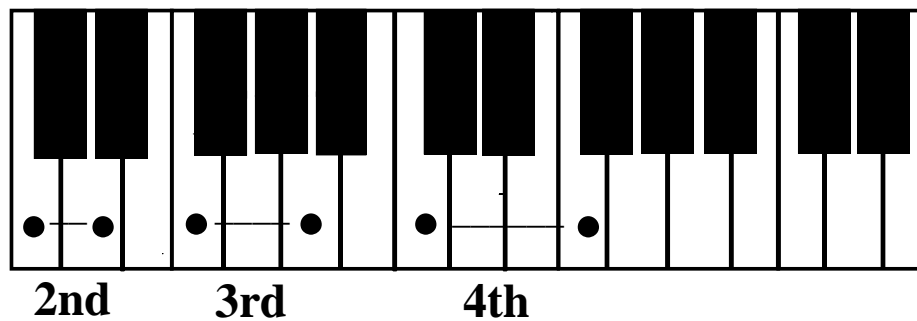


6. Complete each Grand Staff by adding its missing part.

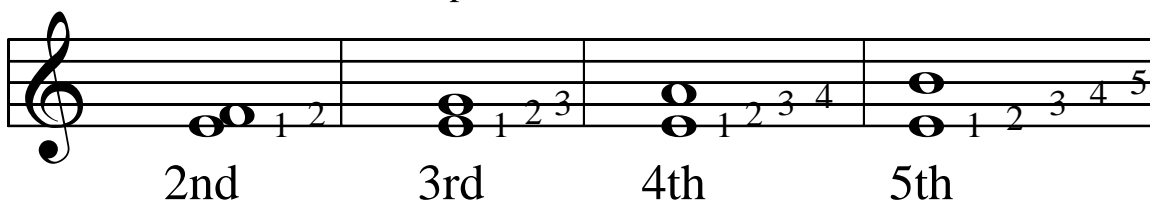


LESSON 7 INTERVALS

An **INTERVAL** is the distance between two notes. Intervals are named with numbers.



When counting intervals on the staff, count the line or space on which each note sits, and all the lines or spaces between the two notes.



Intervals with **EVEN** numbers are made up of **ONE LINE NOTE** and **ONE SPACE NOTE**.

Intervals with **ODD** numbers are made up of **TWO LINE NOTES** or **TWO SPACE NOTES**.

1. Name these intervals. The first one is given.

A musical staff in treble clef with six intervals, each in a separate measure:

- Interval of 4th (labeled '4th' below).
- Interval of 2nd (two notes on adjacent lines).
- Interval of 3rd (two notes on lines with one space between).
- Interval of 4th (two notes on lines with two spaces between).
- Interval of 5th (two notes on lines with three spaces between).
- Interval of 5th (two notes on adjacent spaces).

Below the staff are six horizontal lines for writing the interval names.