

## TABLE OF CONTENTS

Lesson 1: Letter Names of Notes.....	1
Lesson 2: Sharps, Flats, and Naturals.....	3
Lesson 3: Half Steps and Whole Steps.....	9
Lesson 4: Intervals.....	11
An Interval Game.....	14
Lesson 5: Major Key Signatures: C, G, D, and F.....	15
Lesson 6: Major Scales: C, G, D, and F.....	19
A Scale Game.....	21
Lesson 7: C, G, and F Major and minor Five Finger Patterns and Triads.....	23
Lesson 8: D, A, E, and Bb Major and minor Five Finger Patterns and Triads.....	31
Review: Major and minor Five Finger Patterns and Triads.....	37
Lesson 9: Triads of the Scale.....	39
Lesson 10: Primary Triads.....	41
Review: Words Used in Lessons 1-10.....	45
Review: Lessons 1-10.....	47
Lesson 11: Time Signatures.....	53
Lesson 12: Signs and Terms.....	57
Lesson 13: Motif and Repetition.....	63
Review: Lessons 11-13.....	65
Review Test.....	71

3. Write a note above the given note to make these intervals. (The first one is done for you.)

A musical staff with a treble clef. The first measure contains a G4 and a C5, with the interval labeled '4th'. The second measure contains a G4 and a B4, labeled '3rd'. The third measure contains a G4 and a Bb4, labeled '5th'. The fourth measure contains a G4 and an A4, labeled '6th'. The fifth measure contains a G4 and an E4, labeled '2nd'. The sixth measure contains a G4 and a D5, labeled '7th'. The seventh measure contains a G4 and a G5, labeled '8th (octave)'. The eighth measure contains a G4 and an E4, labeled '6th'.

A musical staff with a bass clef. The first measure contains a G2 and a G3, labeled '8th (octave)'. The second measure contains a G2 and a B2, labeled '2nd'. The third measure contains a G2 and a Bb2, labeled '7th'. The fourth measure contains a G2 and an A2, labeled '3rd'. The fifth measure contains a G2 and an E2, labeled '4th'. The sixth measure contains a G2 and a D3, labeled '6th'. The seventh measure contains a G2 and an F#2, labeled '5th'. The eighth measure contains a G2 and an E2, labeled '2nd'.

4. Name the circled intervals in these musical examples. (The first one is done for you.)

a. From *Polka* by Kabalevsky.

A musical score for a piano piece. The first staff is the treble clef, and the second is the bass clef. The first measure of the treble staff has a circled interval between G4 and B4, labeled '3rd'. The second measure has a circled interval between G4 and Bb4. The third measure has a circled interval between G4 and A4. The fourth measure has a circled interval between G4 and E4. The fifth measure has a circled interval between G4 and D5. The sixth measure has a circled interval between G4 and G5. The seventh measure has a circled interval between G4 and E4. The eighth measure has a circled interval between G4 and E4. The bass staff has a circled interval between G2 and B2 in the first measure, and circled intervals between G2 and B2 in the second and third measures, and between G2 and B2 in the fourth measure.

b. From *The Shepherd's Pipe* by Le Couppey.

A musical score for a piano piece. The first staff is the treble clef, and the second is the bass clef. The first measure of the treble staff has a circled interval between G4 and B4. The second measure has a circled interval between G4 and B4. The third measure has a circled interval between G4 and B4. The fourth measure has a circled interval between G4 and B4. The fifth measure has a circled interval between G4 and B4. The sixth measure has a circled interval between G4 and B4. The seventh measure has a circled interval between G4 and B4. The eighth measure has a circled interval between G4 and B4. The bass staff has a circled interval between G2 and B2 in the first measure, and circled intervals between G2 and B2 in the second and third measures, and between G2 and B2 in the fourth measure.

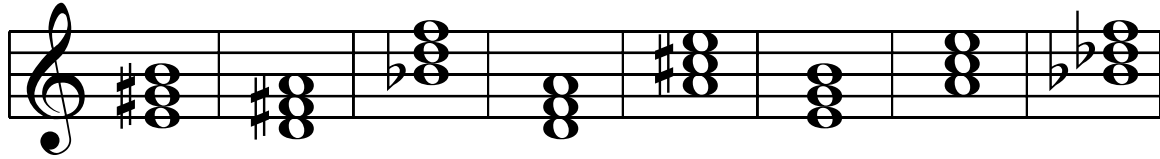
## A SCALE GAME

The notes in each of these problems belong to one Major scale, but they are mixed up. Draw arrows connecting the notes, to put them in the correct order. (The first one is done for you.)

### a. D Major Scale

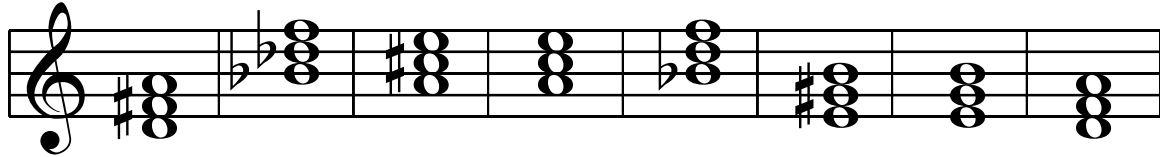
### b. F Major Scale

6. Match these triads with their names by drawing lines to connect them.

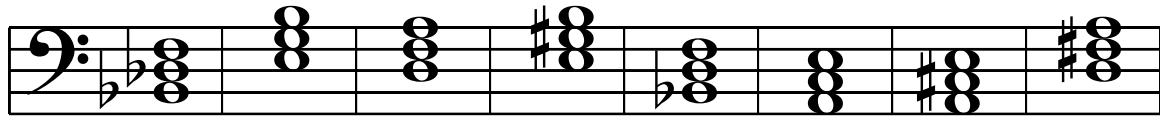


D Major B $\flat$  Major E Major A Major b $\flat$  minor e minor a minor d minor

7. Name these triads.

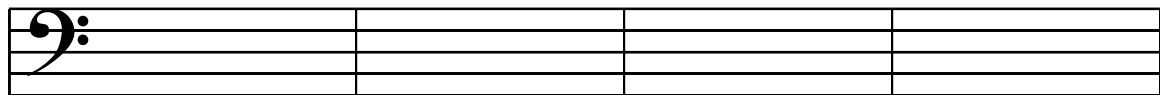


-----



-----

8. Write these triads.

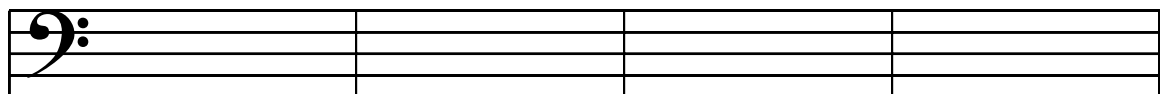


E Major

a minor

B $\flat$  Major

A Major



d minor

b $\flat$  minor

D Major

e minor

5. Answer these questions about this piece.



## POLKA

Kabalevsky, Op. 39, No. 2

Moderately Fast

1 2 3 4

5 6 7 8

- How fast should this piece be played? \_\_\_\_\_
- What is the key or tonality? \_\_\_\_\_
- What do the dots over the notes in the right hand part mean? \_\_\_\_\_
- Name the interval circled in measure 2. \_\_\_\_\_
- How many beats does the half note in measure 8 (the circled one) receive? \_\_\_\_\_
- Write the counts between the bars for the entire piece. (The first measure is done for you.)
- What does the symbol  in measures 5-6 mean? \_\_\_\_\_
- What does the sign  in measure 8 mean? \_\_\_\_\_